








SIC "Lago Ogliastro" - ITA 060001

Beni sparsi di valore storico-architettonico

-  Abbeveratoi, cisterne, fontane, etc.
-  Bagli, casali, cortili, fattorie, masserie
-  Case coloniche, dammusi, depositi
-  Cave, miniere, solfare

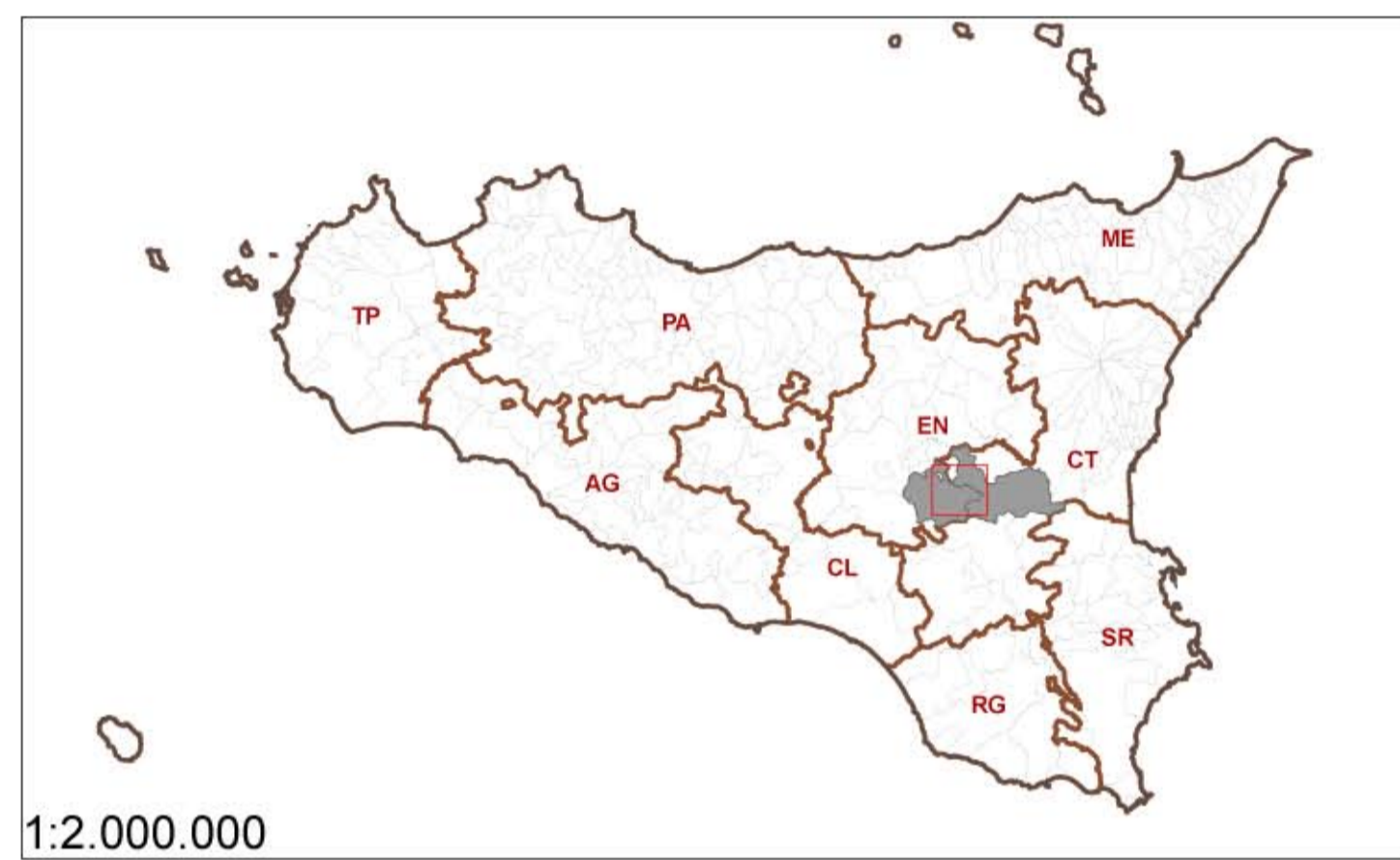
Siti Archeologici

-  Insediamenti frequentazioni
-  Insediamenti cave, miniere
-  Aree di interesse archeologico

Archeologia Industriale

-  Miniera Calvino

- 1 - Masseria - Spedalotto
- 2 - Abbeveratoio
- 3 - Masseria - Torretta
- 4 - Belmontino Sottano - Resti eta' romana tardo romana e medievale
- 5 - Cozzo Campana - Resti eta' preistorica



Regione Siciliana  
Assessorato Territorio ed Ambiente

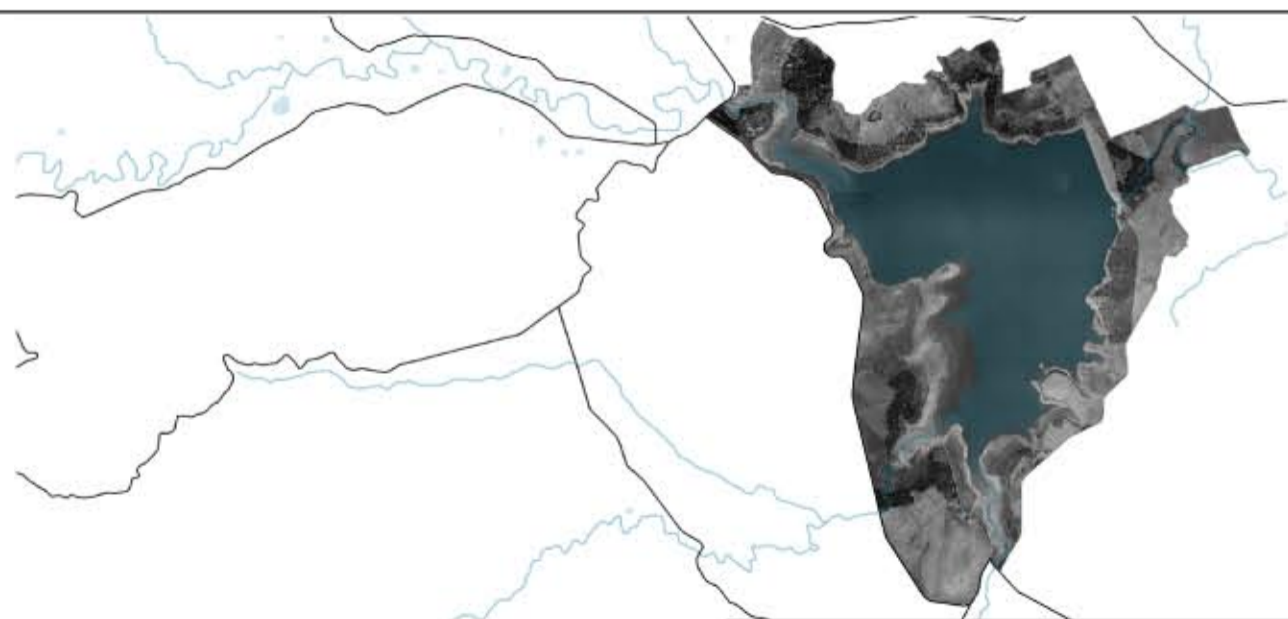


Provincia Regionale di Enna - Settore VIII - Ambiente  
Territorio e Protezione Civile  
Servizio Pianificazione del Territorio e Gestione  
Riserve naturali

Sito di Importanza Comunitaria Lago Ogliastro (ITA 060001)

PIANO DI GESTIONE

Stato di avanzamento - Relazione intermedia - Agosto 2008



Tav. 6 - Beni architettonici e archeologici  
scala 1:10.000

